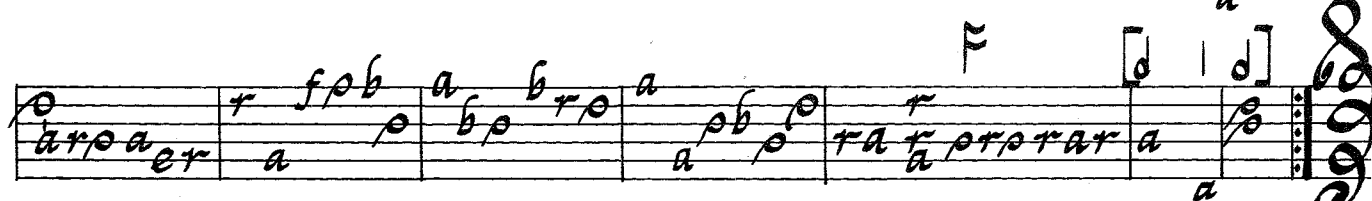
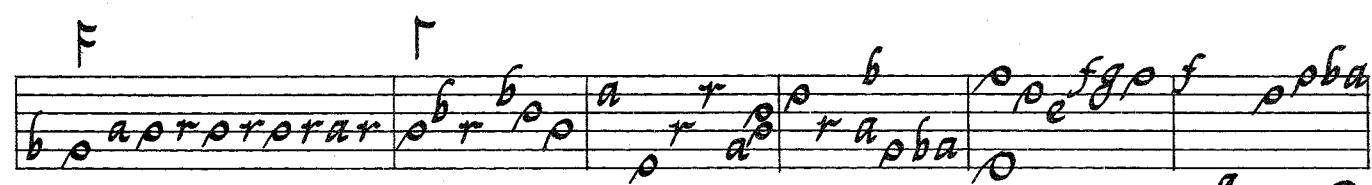
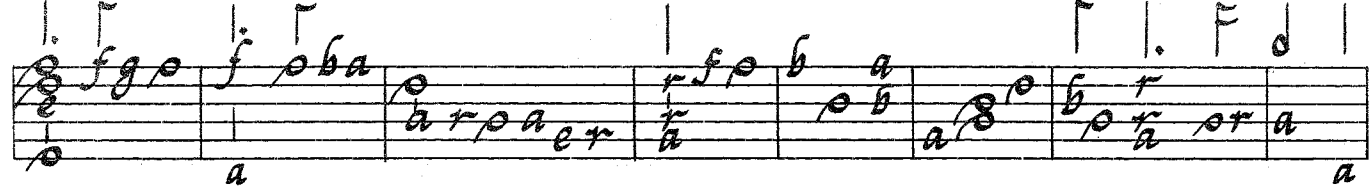
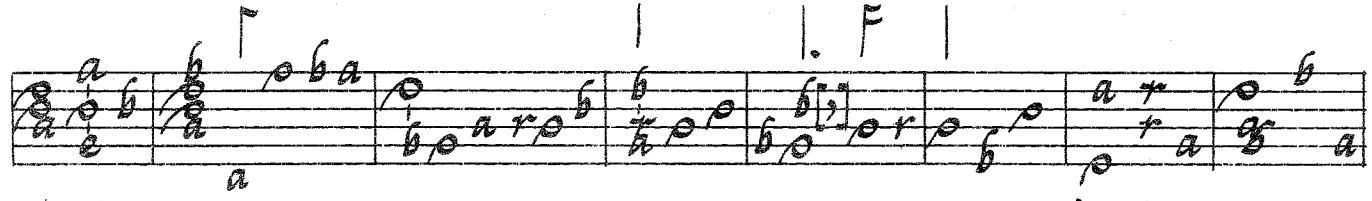
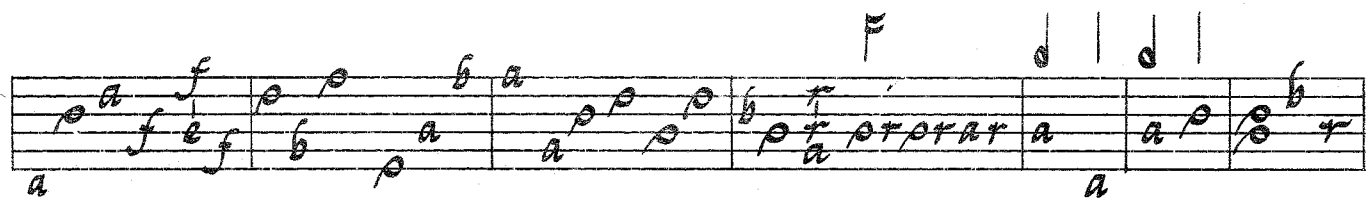
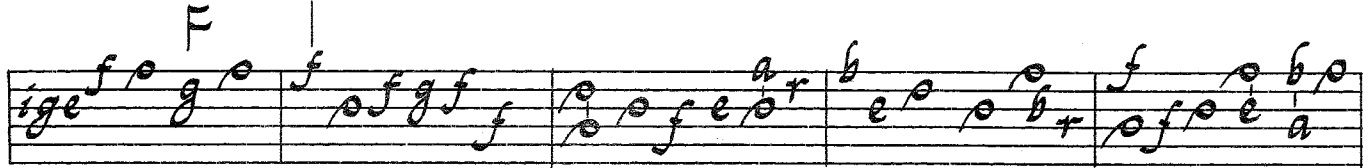
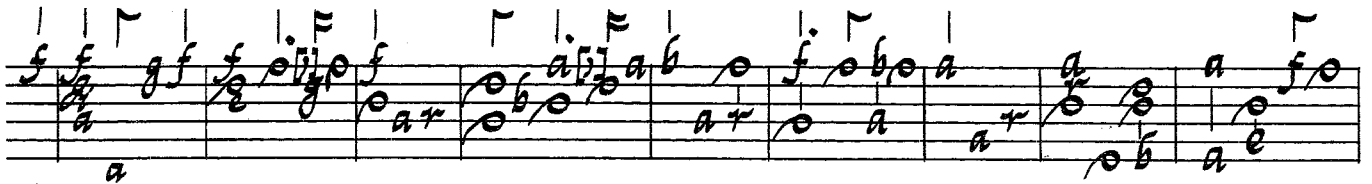


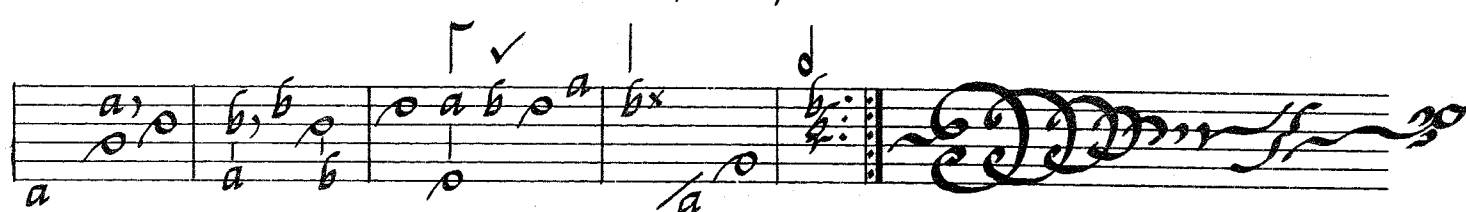
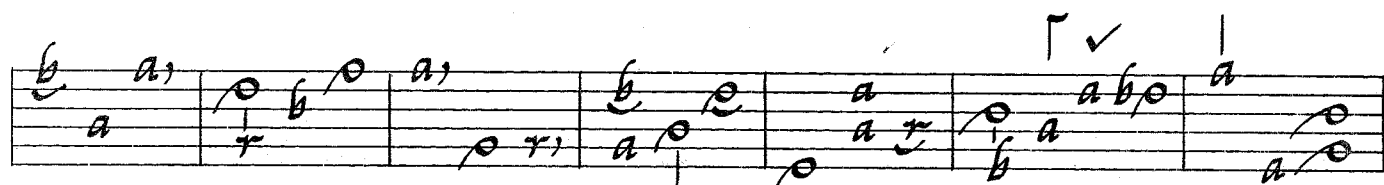
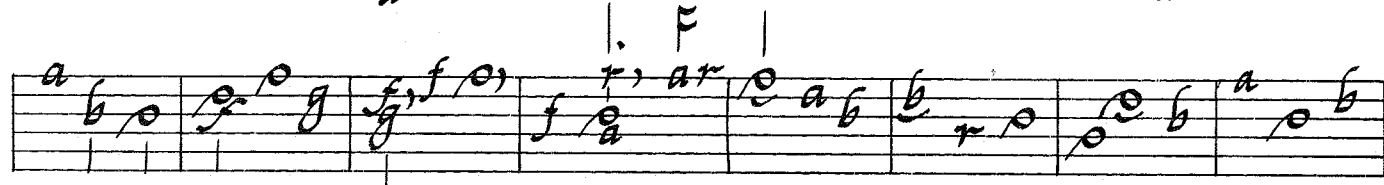
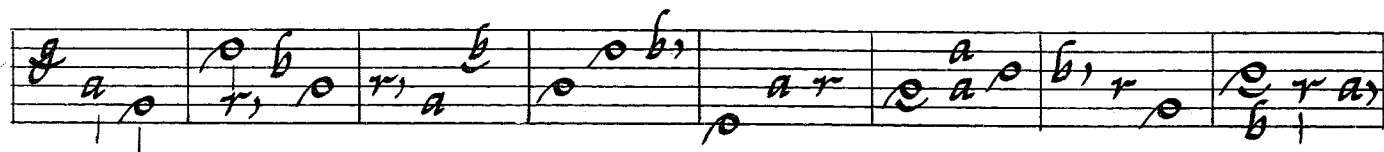
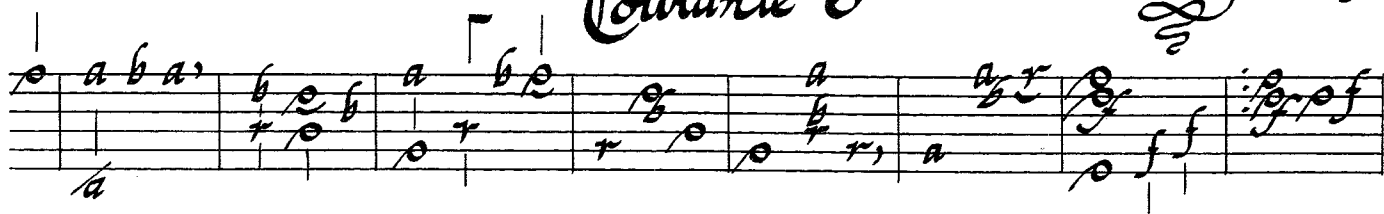
Courante 5

Cherbury L.B. f 37



Courante 6

Cherbury L.B. 40



N.B. All ornaments are editorial & are offered as examples that might be applied to the other pieces in this edition.

) = superior appoggiatura or trill.

∪ = inferior appoggiatura (slur from below).

x = mordent (W).

| = thumb stroke.

$\begin{matrix} \flat \\ \flat \\ + \end{matrix}$ = brush strings with index finger going into the hand.

$\begin{matrix} \flat \\ \flat \\ + \end{matrix}$ = brush strings with the nail of the index finger moving away from the hand.

√ = notes inégales. 